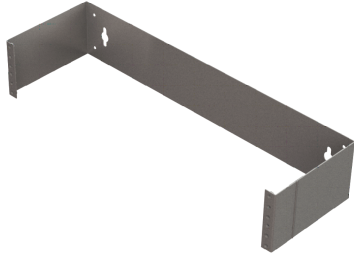


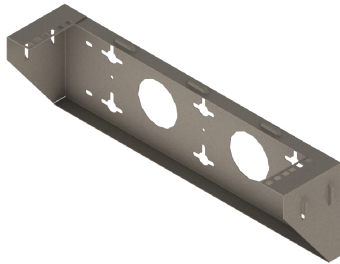


HINGED WALLMOUNT BRACKET & VERTICAL PANEL MOUNT



HINGED WALL BRACKET

- 16GA HIGH-STRENGTH STEEL CONSTRUCTION
- 25 LB LOAD RATING
- 19" RACK-MOUNT WIDTH
- HOLES TAPPED 12-24; HARDWARE INCLUDED
- AVAILABLE IN 1U, 2U, & 4U

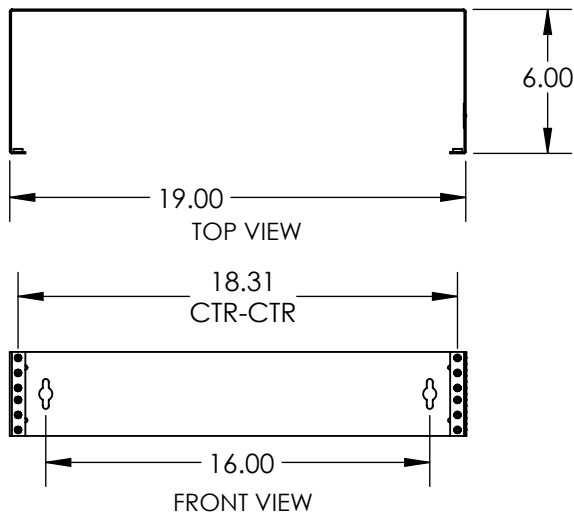


VERTICAL PANEL MOUNT

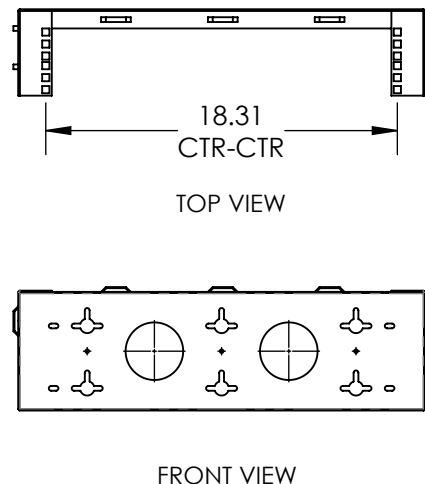
- CABLE TIE-DOWN LANCES ON TOP & SIDES OF PANEL
- 25 LB LOAD RATING
- 19" RACK-MOUNT WIDTH
- 3/8" SQUARE HOLES WITH 12-24 RU NUTS INSTALLED
- AVAILABLE IN 2U & 4U

PART #	DESCRIPTION	COLOR	WT (LBS.)
SWB19016-FBK	WALL BRACKET, 1U, 12-24 TAPPED X 6" D	BLACK	2
SWB19026-FBK	WALL BRACKET, 2U, 12-24 TAPPED X 6" D	BLACK	2
SWB19046-FBK	WALL BRACKET, 4U, 12-24 TAPPED X 6" D	BLACK	4
SWBV19CN02-FBK	VERTICAL PANEL MOUNT, 2U, CAGE-NUT	BLACK	2
SWBV19CN04-FBK	VERTICAL PANEL MOUNT, 4U, CAGE-NUT	BLACK	4

HINGED WALL BRACKET



VERTICAL PANEL MOUNT



SIGNATURE PRODUCTS, LLC
 2500 East Miraloma Way
 Anaheim, California 92806

(714) 823-7089
info@signatureproductsllc.com
www.signatureproductsllc.com